

HIGH CEILING ESCAPE ROUTE LIGHTING LEDLUX-SPOT2-HCA

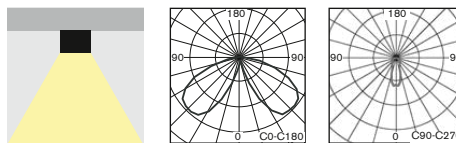
**FOR HIGH CEILING >4m
PRE VYSOKÉ STROPY >4m**



HIGH CEILING >4m



HIGH CEILING >4m



• **POWERFUL** surface mounted escape-route LED fixture available for all non-maintained (NM), maintained (M) or centralised (C) emergency lighting especially designed for **HIGH CEILING ESCAPE ROUTE** illumination applications in accordance with EN1838

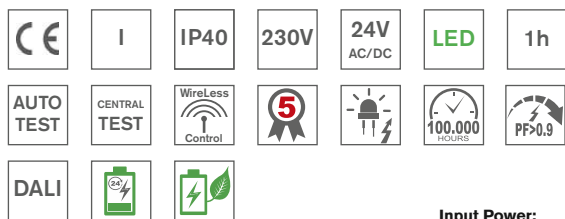
It is available in all following versions:

- **AUTOTEST** (-AT)
- **DALI**
- **CENTRALTEST** (-ATXL) for **ELMAX LOOK** system (look up also page No.22)
- **CENTRALTEST** (-ATRF) for **ELMAX Wireless** system (look up page No.24)
- **CENTRAL BATTERY** (C.LEDLUX-SPOT2) for **non-addressable CBS**
- Conforming to the requirement of EN60598-2-22, EN1838, EN62034
- Design: metal sheet body with PE powder coat finish RAL9006 (grey) or RAL9003
- Výkonné LED svietidlá pre **netrvalé (NM), trvalé (M)** alebo **centrálne (C)** núdzové osvetlenie pre povrchovú montáž **špeciálne navrhnuté pre aplikácie v koridoroch vo VÝŠKACH** ako napr. sklady, komunikačné tunely,... aj s funkciami:
 - **AUTOTEST** (-AT)
 - **DALI**
 - **CENTRALTEST** (-ATXL) pre systém ELMAX LOOK (pozri str.22)
 - **bezdrôtový CENTRALTEST** (-ATRF) pre ELMAX-Wireless systém (str.24)
 - **CENTRAL BATTERY** (C.LEDLUX-SPOT2) pre **neadresovateľné CBS**
- spĺňa požiadavky európskej normy EN 60598-2-22, EN1838, EN62034
- konštrukcia: teleso z plechu vo farbe RAL9006 (šedá) alebo RAL9003 (biela)

STANDARD FEATURES

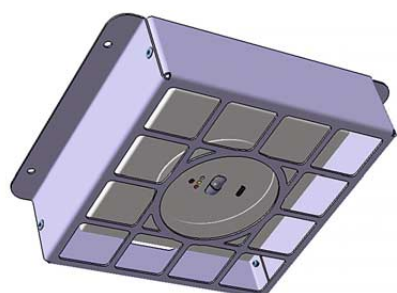
ŠTANDARDNÁ VÝBAVA

- **High efficient HighPower (170lm/W) LONGLIFE LEDs (>100.000h)**
- **NEW Advanced Electronics**
- **LONGLIFE LIFEPO4 battery**
- **Special LED lens** for perfect light distribution
- **Installation Mode** (battery protection, for more details look up page No.28)
- **Intelligent battery charging**
- **DIP Switch** allowing to preset following functions:
 - **INSTALLATION MODE** activation/deactivation (look up page No.28)
 - **Maintained mode** activation/deactivation
- Addressable CENTRALTEST communication module (for ATXL and ATRF versions only)
- LEDs indicating presence of power supply and signaling failures & TEST button
- **vysoko účinné HighPower LED (170lm/W) so životnosťou min.100000h**
- **progresívna elektronická jednotka**
- **LONGLIFE LIFEPO4 batéria**
- špeciálna LED optika pre perfektnú distribúciu svetla
- **Inštalčný mód** (ochrana batérie, pozri aj str.28)
- **Inteligentné nabíjanie batérie**
- **DIP prepínač** umožňujúci prednastavenie funkcií:
 - **Instalačný mód** aktivácia / deaktivácia (pozri aj str.28)
 - **trvalé núdzové osvetlenie** aktivácia / deaktivácia
- adresovateľný CENTRALTEST komunikačný modul (len pre ATXL a ATRF verzie)
- signalizácia LED a TEST tlačítko

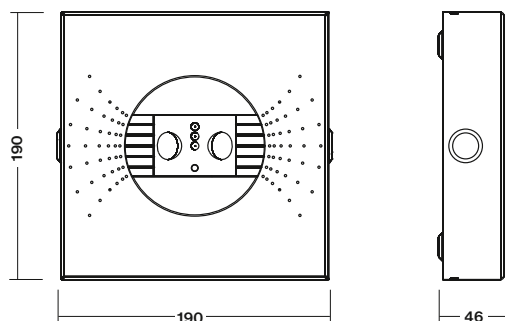


Input Power:

- 8,8W/ 9,5VA (maintained M/1h)
- 3,5W/ 4,6VA (non-maintained NM/1h)
- 4,6W/ 5,2VA (CBS)

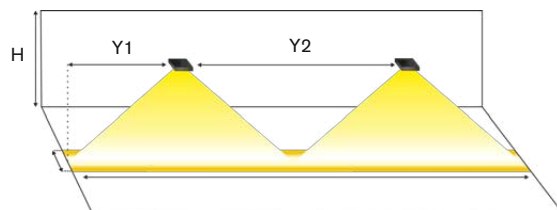


Optional Protective Cage
Príplatková ochranná mreža
Order Code: 182-B-222-00-01





Light source	LED 5000K
LED Light output	450lm
Housing colour	RAL9003 White RAL9006 Grey
Application	High Ceiling Escape route lighting
Max luminaire spacing	up to 30m > 1lx



1LX SPACING TABLE / ROZMIESTNENIE PRE 1LX

H (m)	Y1 (m)	Y2 (m)
4,00	8,8	19,8
5,00	10,0	22,5
6,00	11,3	25,3
7,00	12,3	28,0
8,00	13,0	30,0

Page No.18

AUTOTEST -AT NM/M

Type	Colour	Light Source	Light Flux / Emergency mode	Battery	Order Code	Weight
MULTILED-SPOT2-HCA-P-AT.1h	White / biela	2xHighPower LED	450 lm / 450 lm	LiFePo4 6,4V/2,0Ah	182-B-222-04-00-01	1,1 kg
MULTILED-SPOT2-HCA-P-AT.1h	Grey / šedá	2xHighPower LED	450 lm / 450 lm	LiFePo4 6,4V/2,0Ah	182-B-222-04-00-02	1,1 kg

DALI SELF-CONTAINED

Type	Colour	Light Source	Light Flux / Emergency mode	Battery	Order Code	Weight
MULTILED-SPOT2-HCA-P-DALI.1h	White / biela	2xHighPower LED	450 lm / 450 lm	LiFePo4 6,4V/2,0Ah	182-B-240-04-00-01	1,1 kg
MULTILED-SPOT2-HCA-P-DALI.1h	Grey / šedá	2xHighPower LED	450 lm / 450 lm	LiFePo4 6,4V/2,0Ah	182-B-240-04-00-02	1,1 kg

Page No.22

CENTRALTEST -ATXL ELMAX-LOOK

Type	Colour	Light Source	Light Flux / Emergency mode	Battery	Order Code	Weight
MULTILED-SPOT2-HCA-P-ATXL.1h	White / biela	2xHighPower LED	450 lm / 450 lm	LiFePo4 6,4V/2,0Ah	182-B-241-04-00-01	1,2 kg
MULTILED-SPOT2-HCA-P-ATXL.1h	Grey / šedá	2xHighPower LED	450 lm / 450 lm	LiFePo4 6,4V/2,0Ah	182-B-241-04-00-02	1,2 kg

Page No.24

Wireless CENTRALTEST ELMAX-ATRF

Type	Colour	Light Source	Light Flux / Emergency mode	Battery	Order Code	Weight
MULTILED-SPOT2-HCA-P-ATRF.1h	White / biela	2xHighPower LED	450 lm / 450 lm	LiFePo4 6,4V/2,0Ah	182-B-246-04-00-01	1,2 kg
MULTILED-SPOT2-HCA-P-ATRF.1h	Grey / šedá	2xHighPower LED	450 lm / 450 lm	LiFePo4 6,4V/2,0Ah	182-B-246-04-00-02	1,2 kg

CENTRAL BATTERY (CBS)

Type	Colour	Version	Light Source	Light Flux	Order Code	Weight
C.LEDLUX-SPOT2-HCA-P 230V AC/DC	White / biela	CBS NON-ADDRESSABLE	2xHighPower LEDs	450 lm	182-B-224-00-00-01	0,8 kg
C.LEDLUX-SPOT2-HCA-P 230V AC/DC	Grey / šedá	CBS NON-ADDRESSABLE	2xHighPower LEDs	450 lm	182-B-224-00-00-02	0,8 kg
C.LEDLUX-SPOT2-HCA-P 24V AC/DC	White / biela	CBS NON-ADDRESSABLE	2xHighPower LEDs	450 lm	182-B-225-00-00-01	0,8 kg
C.LEDLUX-SPOT2-HCA-P 24V AC/DC	Grey / šedá	CBS NON-ADDRESSABLE	2xHighPower LEDs	450 lm	182-B-225-00-00-02	0,8 kg

DALI CENTRAL BATTERY (CBS)

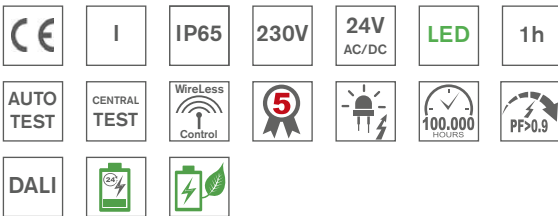
Type	Colour	Version	Light Source	Light Flux	Order Code	Weight
C.LEDLUX-SPOT2-HCA-P-DALI 230V AC	White / biela	DALI CBS	2xHighPower LEDs	450 lm	182-B-242-00-00-01	0,8 kg
C.LEDLUX-SPOT2-HCA-P-DALI 230V AC	Grey / šedá	DALI CBS	2xHighPower LEDs	450 lm	182-B-242-00-00-02	0,8 kg

Look up pages No. 190-197 for 1lx Spacing tables
Pozri str.190-197 pre rozmiestnenie svietidiel na dosiahnutie 1lx

All LED parameters are describing the light source lm output. For the lighting calculation please use LDT file available on www.sec.sk
LED parametre sú platné pre LED svetelné zdroje samotné. Pre svetelno-technický výpočet použite LDT súbor na www.sec.sk

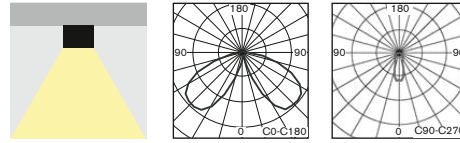
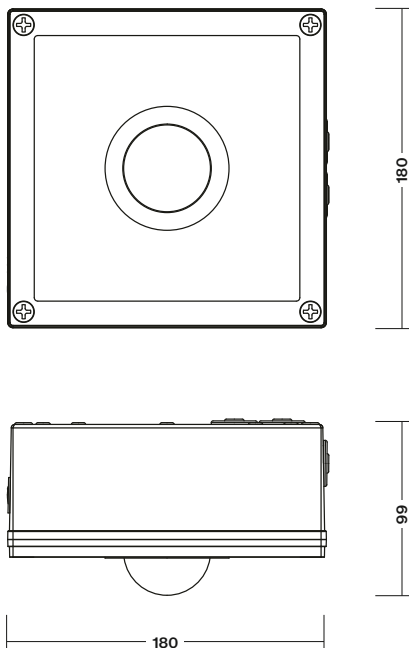


HIGH CEILING >4m



Input Power:

- 8,8W/ 9,5VA (maintained M/1h)
- 3,5W/ 4,6VA (non-maintained NM/1h)
- 4,6W/ 5,2VA (CBS)



- POWERFUL surface mounted escape-route LED fixture available for all non-maintained (NM), maintained (M) or centralised (C) emergency lighting especially designed for **HIGH CEILING ESCAPE ROUTES where IP65 is required**

• It is available in all following versions:

- **AUTOTEST** (-AT)
- **DALI**
- **CENTRALTEST** (-ATXL) for **ELMAX LOOK** system (look up also page No.22)
- **CENTRALTEST** (-ATRF) for **ELMAX Wireless** system (look up page No.24)
- **CENTRAL BATTERY** (C.LEDLUX-SPOT2) for **non-addressable CBS**
- Conforming to the requirement of EN60598-2-22, EN1838, EN62034
- Design: body made of plastic

• Výkonné LED svietidlá pre **netrvalé (NM), trvalé (M)** alebo **centrálne (C)** núdzové osvetlenie pre povrchovú montáž **špeciálne navrhnuté pre aplikácie v koridoroch vo VÝŠKACH** ako napr. sklady, komunikačné tunely... všade, **kde je IP65 požadované**

• aj s funkciami:

- **AUTOTEST** (-AT)
- **DALI**
- **CENTRALTEST** (-ATXL) pre systém ELMAX LOOK (pozri str.22)
- **bezdrôtový CENTRALTEST** (-ATRF) pre ELMAX-Wireless systém (str.24)
- **CENTRAL BATTERY** (C.LEDLUX-SPOT2) pre **neadresovateľné CBS**
- spĺňa požiadavky európskej normy EN 60598-2-22, EN1838, EN62034
- konštrukcia: plastové teleso

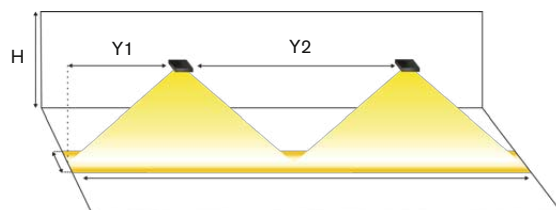
STANDARD FEATURES

ŠTANDARDNÁ VÝBAVA

- High efficient HighPower (170lm/W) **LONGLIFE LEDs (>100.000h)**
- **NEW Advanced Electronics**
- **LONGLIFE LIFEPO4 battery**
- **Special LED lens** for perfect light distribution
- **Installation Mode** (battery protection, for more details look up page No.28)
- **Intelligent battery charging**
- **INSTALLATION MODE** activation/deactivation (look up page No.28)
- Addressable CENTRALTEST communication module (ATXL and ATRF versions only)
- LEDs indicating presence of power supply and signaling failures & TEST button
- **vysoke účinné HighPower LED (170lm/W) so životnosťou min.100000h**
- **progresívna elektronická jednotka**
- **LONGLIFE LIFEPO4 batéria**
- špeciálna LED optika pre perfektnú distribúciu svetla
- **Inštalčný mód** (ochrana batérie, pozri aj str.28)
- **Inteligentné nabíjanie batérie**
- **Inštalčný mód** aktivácia / deaktivácia (pozri aj str.28)
- adresovateľný CENTRALTEST komunikačný modul (len pre ATXL a ATRF verzie)
- signalizácia LED a TEST tlačítko

1LX SPACING TABLE / ROZMIESTNENIE PRE 1LX

H (m)	Y1 (m)	Y2 (m)
4,00	7,9	17,8
5,00	9,0	20,3
6,00	10,2	22,7
7,00	11,1	25,2
8,00	11,7	30,0



Light source	LED 5000K
LED Light output	450lm
Housing colour	Light grey plastic
Application	High Ceiling
	Escape route lighting
Max luminaire spacing	up to 30m > 1lx



Page No.18

AUTOTEST -AT NM/M

Type	Light Source	Light Flux / Emergency mode	Battery	Order Code	Weight
LEDLUX-SPOT3-HCA-P-AT.1h IP65	2xHighPower LED	450 lm / 450 lm	LiFePo4 6,4V/2,0Ah	344-B-401-04-00-00	0,8 kg

DALI SELF-CONTAINED

Type	Light Source	Light Flux / Emergency mode	Battery	Order Code	Weight
LEDLUX-SPOT3-HCA-P-DALI.1h IP65	2xHighPower LED	450 lm / 450 lm	LiFePo4 6,4V/2,0Ah	344-B-402-04-00-00	0,8 kg

Page No.22

CENTRALTEST -ATXL ELMAX-LOOK

Type	Light Source	Light Flux / Emergency mode	Battery	Order Code	Weight
LEDLUX-SPOT3-HCA-P-ATXL.1h IP65	2xHighPower LED	450 lm / 450 lm	LiFePo4 6,4V/2,0Ah	344-B-403-04-00-00	0,8 kg

Page No.24

Wireless CENTRALTEST ELMAX-ATRF

Type	Light Source	Light Flux / Emergency mode	Battery	Order Code	Weight
LEDLUX-SPOT3-HCA-P-ATRF.1h IP65	2xHighPower LED	450 lm / 450 lm	LiFePo4 6,4V/2,0Ah	344-B-413-04-00-00	0,8 kg

CENTRAL BATTERY (CBS)

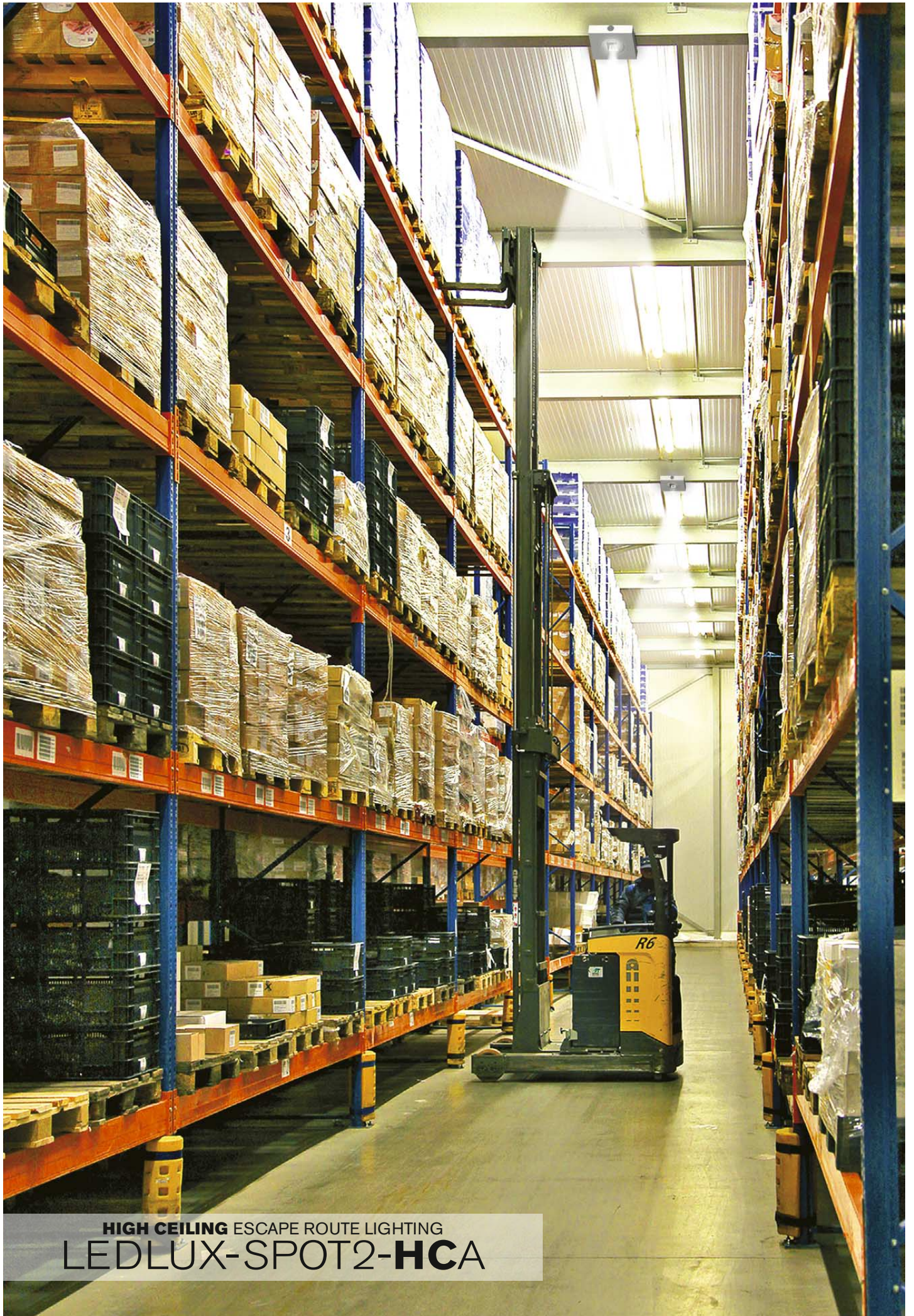
Type	Version	Light Source	Light Flux	Order Code	Weight
C.LEDLUX-SPOT3-HCA-P IP65 230V AC/DC	CBS NON-ADDRESSABLE	2xHighPower LEDs	450 lm	344-B-404-00-00-00	0,7 kg
C.LEDLUX-SPOT3-HCA-P IP65 24V AC/DC	CBS NON-ADDRESSABLE	2xHighPower LEDs	450 lm	344-B-405-00-00-00	0,7 kg

DALI CENTRAL BATTERY (CBS)

Type	Version	Light Source	Light Flux	Order Code	Weight
C.LEDLUX-SPOT3-HCA-P-DALI IP65 230V AC	CBS NON-ADDRESSABLE	2xHighPower LEDs	450 lm	344-B-406-00-00-00	0,7 kg

Look up pages No. 190-197 for 1lx Spacing tables
Pozri str.190-197 pre rozmiestnenie svietidiel na dosiahnutie 1lx

All LED parameters are describing the light source lm output. For the lighting calculation please use LDT file available on www.sec.sk
LED parametre sú platné pre LED svetelné zdroje samotné. Pre svetelno-technický výpočet použite LDT súbor na www.sec.sk



HIGH CEILING ESCAPE ROUTE LIGHTING
LEDLUX-SPOT2-HCA